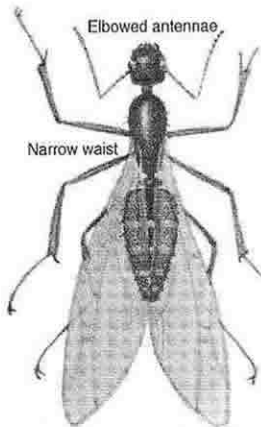


Learn the dangerous difference between ants and termites!

If you see winged ant-like insects around your property, you must know if they are ants or subterranean termites. If they are swarming termites, there is an established colony nearby looking for new nesting areas...and that means your home is in danger. Call us immediately, we'll eliminate the old colony and protect you from these home-damaging insects.

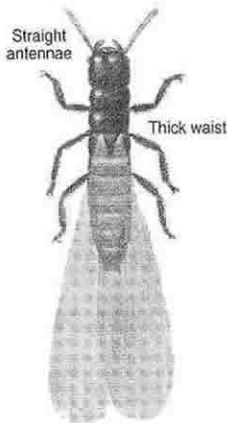
This is a winged **ANT**



Front wings longer than back wings

Actual size 1/2-inch

This is a winged **TERMITE**



Both pairs of wings same size

Actual size 1/2-inch

These are termites



WORKER

Actual size $\frac{1}{4}$ -inch

Remains hidden inside wood or earth. Resembles a grayish-white ant—except subterranean termite has thick waist and straight antennae. His job is to feed colony; to do this he travels between the ground and wood through tubes.



SOLDIER

Actual size $\frac{5}{16}$ -inch

Remains hidden inside wood or earth. Resembles worker, except for longer armored head, with large jaws to ward off enemies. His job is to defend the colony, mainly against ants.



QUEEN

Actual size $\frac{1}{2}$ -inch

Young queens swarm to form new colonies. Brownish or black, with a thick waist and 2 pairs of wings, equal in length. Her only duty is to lay eggs.

Call us for professional protection...and be sure!

**GO-FORTH
TERMITE & PEST CONTROL**